

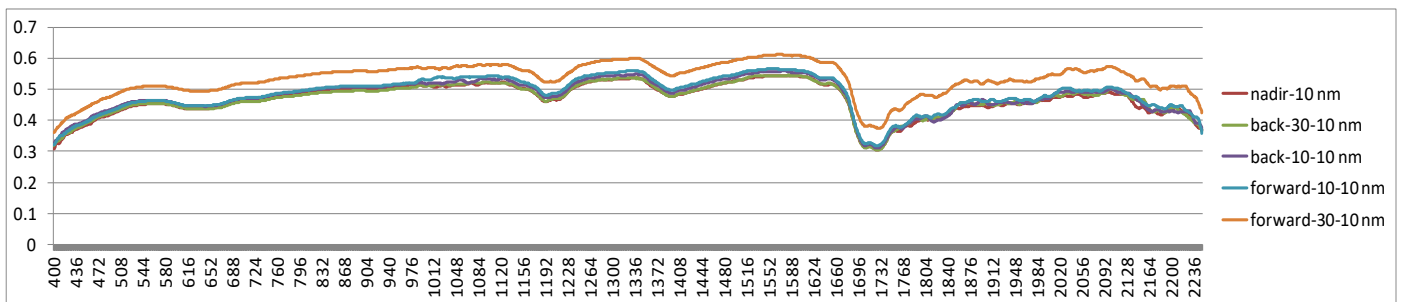
Reflectance Measurement Metsälinkki Gray, light

LightGrayFelt

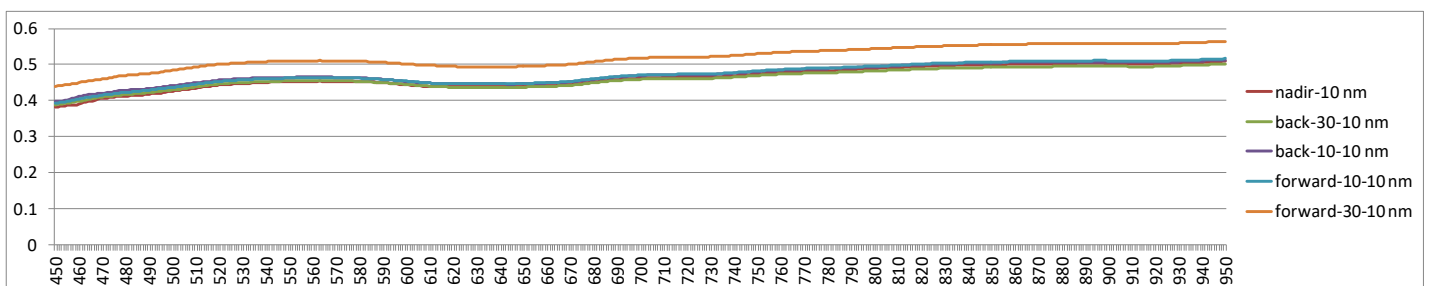
Metadata

Authors: Teemu Hakala / MML
 Target name: Level 4 – Gray, light
 Measurement instrument: Reflectometer
 Measurement light source: Laboratory light source
 White reference target: Spectralon 99%
 Measurement campaign: 2020 MosaicMillFelt
 Measurement time: 2020 January
 Measurement location: FGI lab

Reflectance curve 400 – 2250 nm



Reflectance curve 450 – 950 nm



Reflectance averages 450 – 950 nm

| 400 - 450 | 450 - 500 | 500 - 550 | 550 - 600 | 600 - 650 | 650 - 700 | 700 - 750 | 750 - 800 | 800 - 850 | 850 - 900 | 900 - 950 | 450 - 950 |
|-----------|-----------|-----------|-----------|-----------|-----------|-----------|-----------|-----------|-----------|-----------|-----------|
| 0.354 | 0.406 | 0.443 | 0.451 | 0.439 | 0.450 | 0.467 | 0.482 | 0.495 | 0.502 | 0.503 | 0.464 |