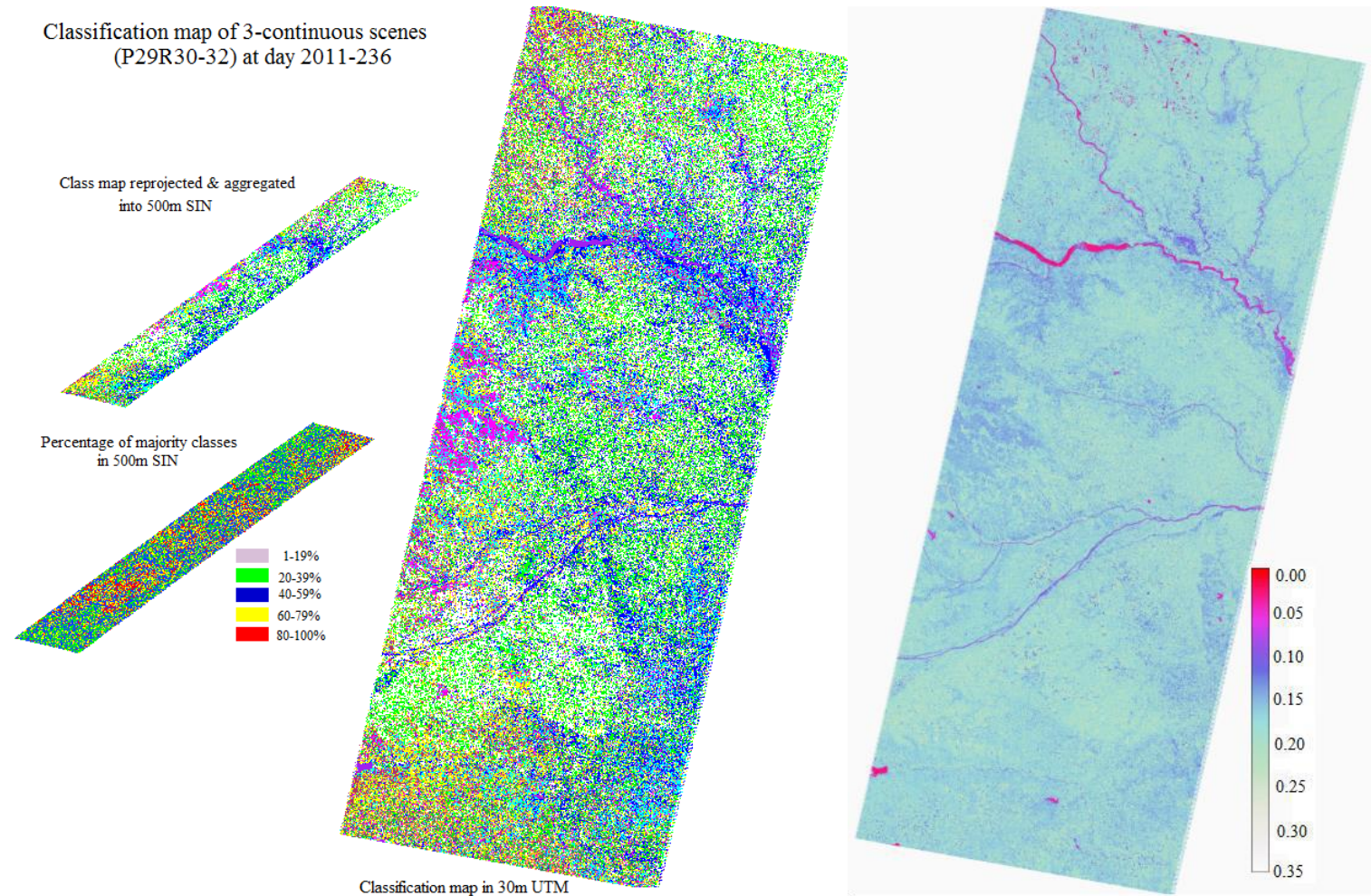
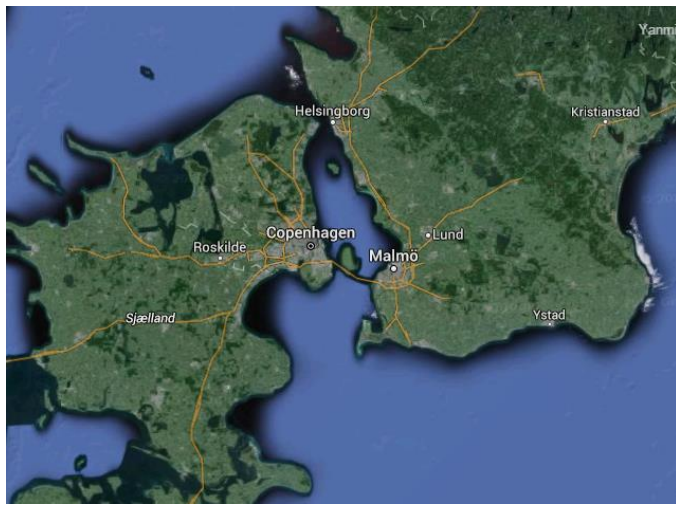


Landsat 8 Albedo Processing Applied to Sentinel-2A

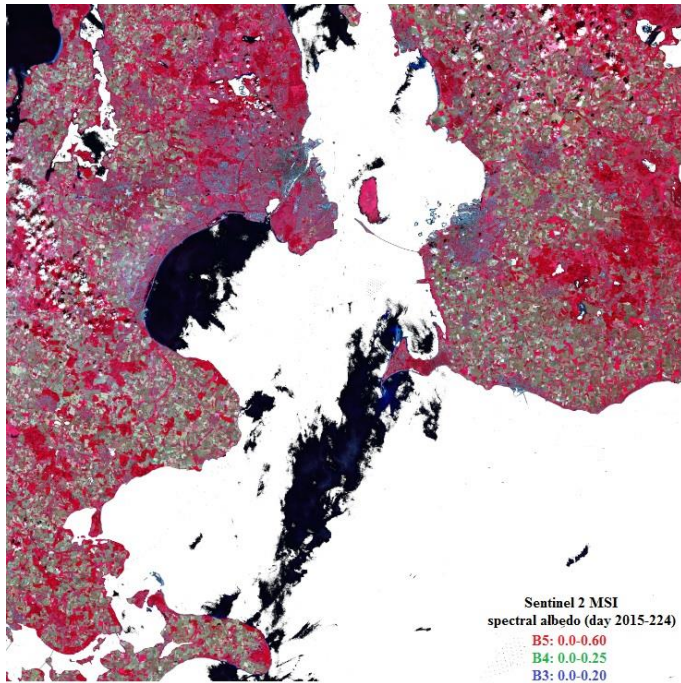
Crystal Schaaf, Yanmin Shuai, Angela Erb, Qingsong Sun, Zhan Li, Yan Liu
University of Massachusetts Boston

- Landsat 8 Albedos are prepared by coupling Landsat spectral data with associated MODIS BRDFs.
- Applied same strategy to a sample Sentinel-2A scene



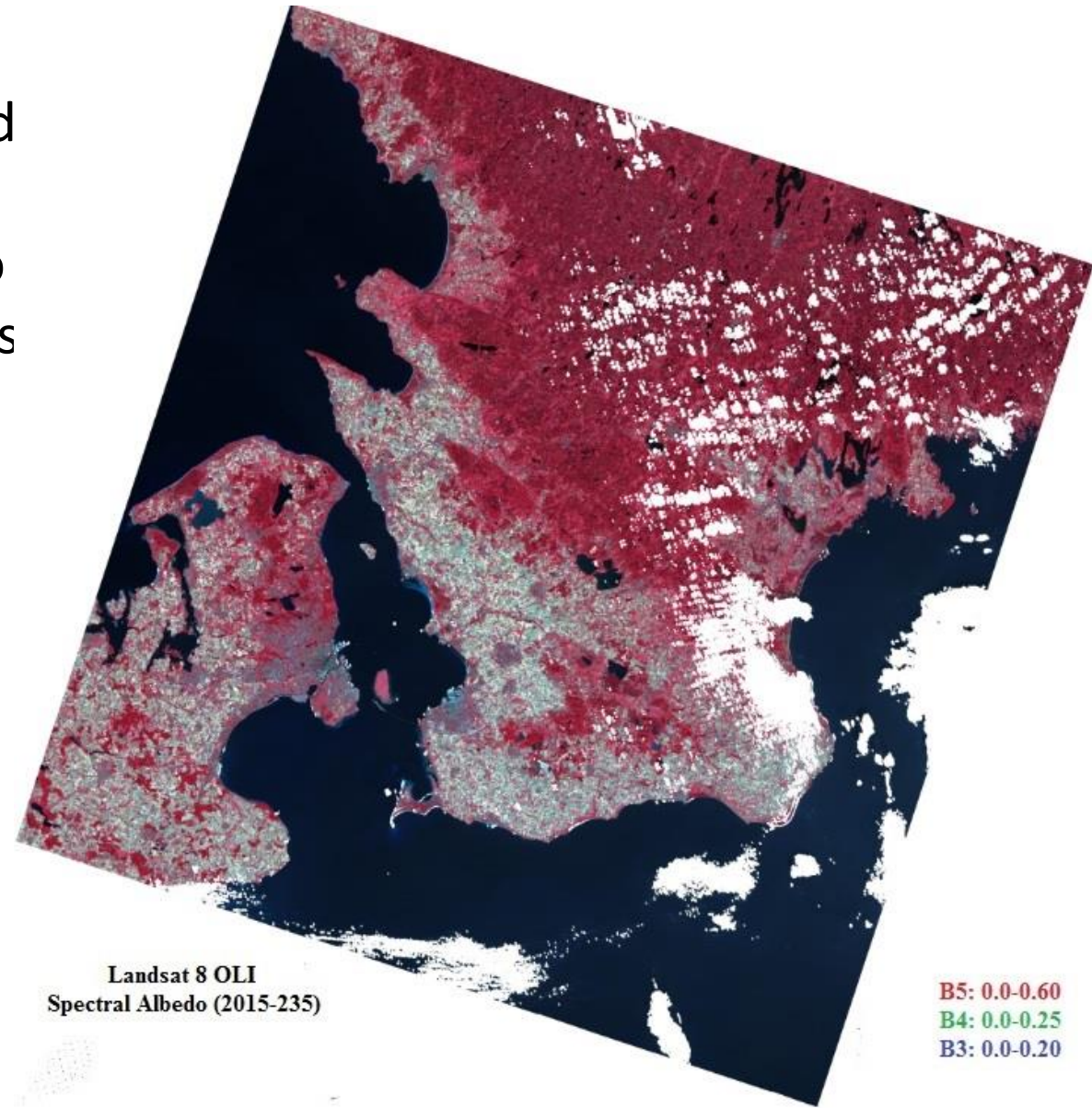


Landsat 8 Albedo
Processing applied
to Sentinel-2A
White Sky Albedo
(WSA) using atmos
correction from
S2toolbox



Fill values in white

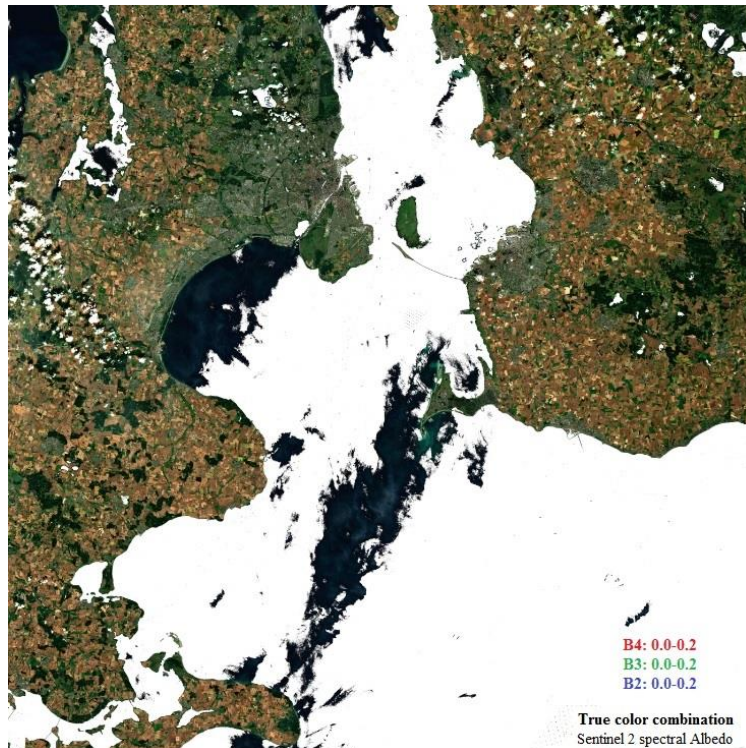
Spectral WSA (B5,4,3 false color combination)
for Sentinel-2A (DOY 2015-224)



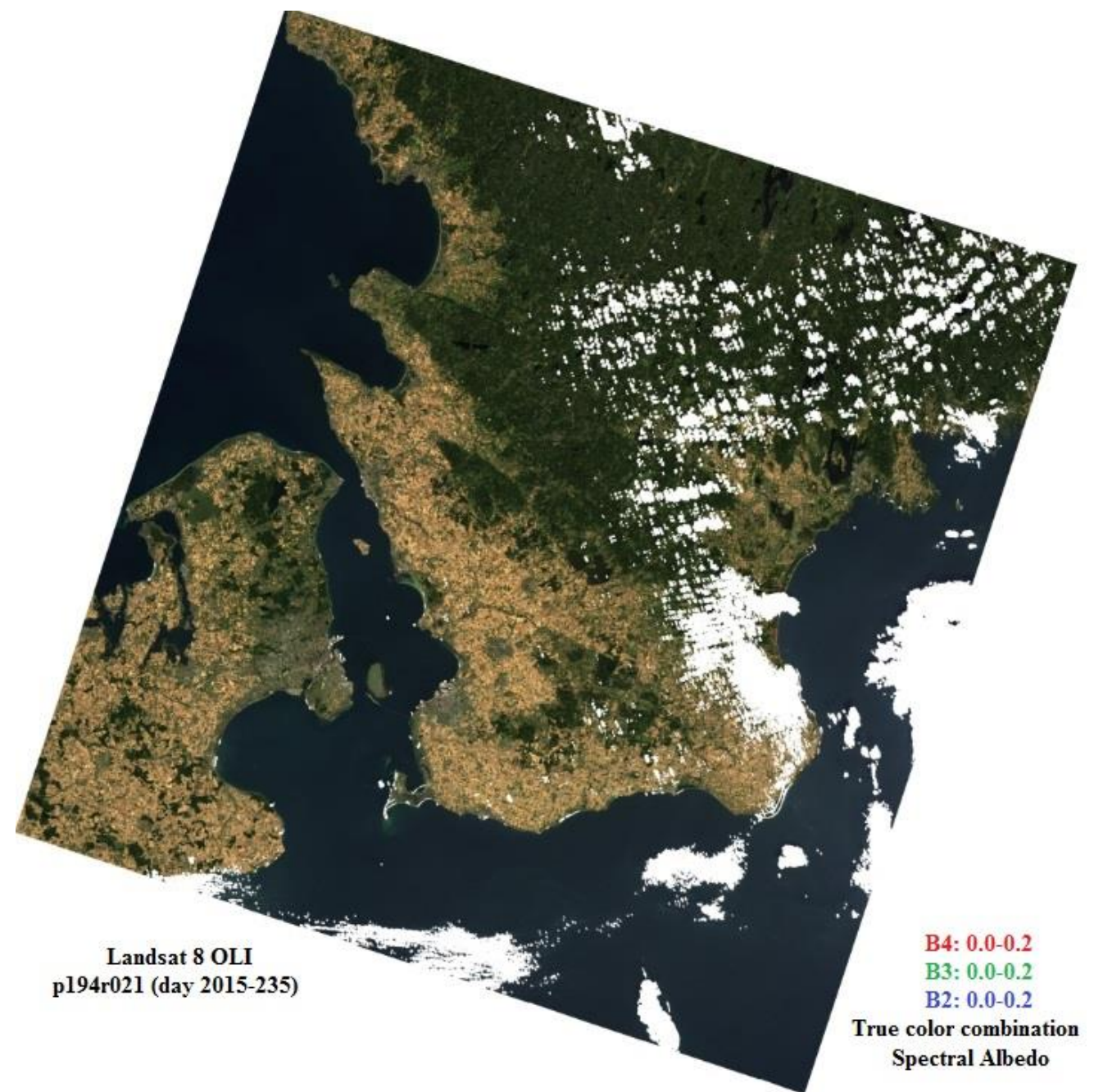
Landsat 8 OLI
Spectral Albedo (2015-235)

Spectral WSA (B5,4,3 false color combination) for
Landsat 8 OLI (DOY 2015-235)

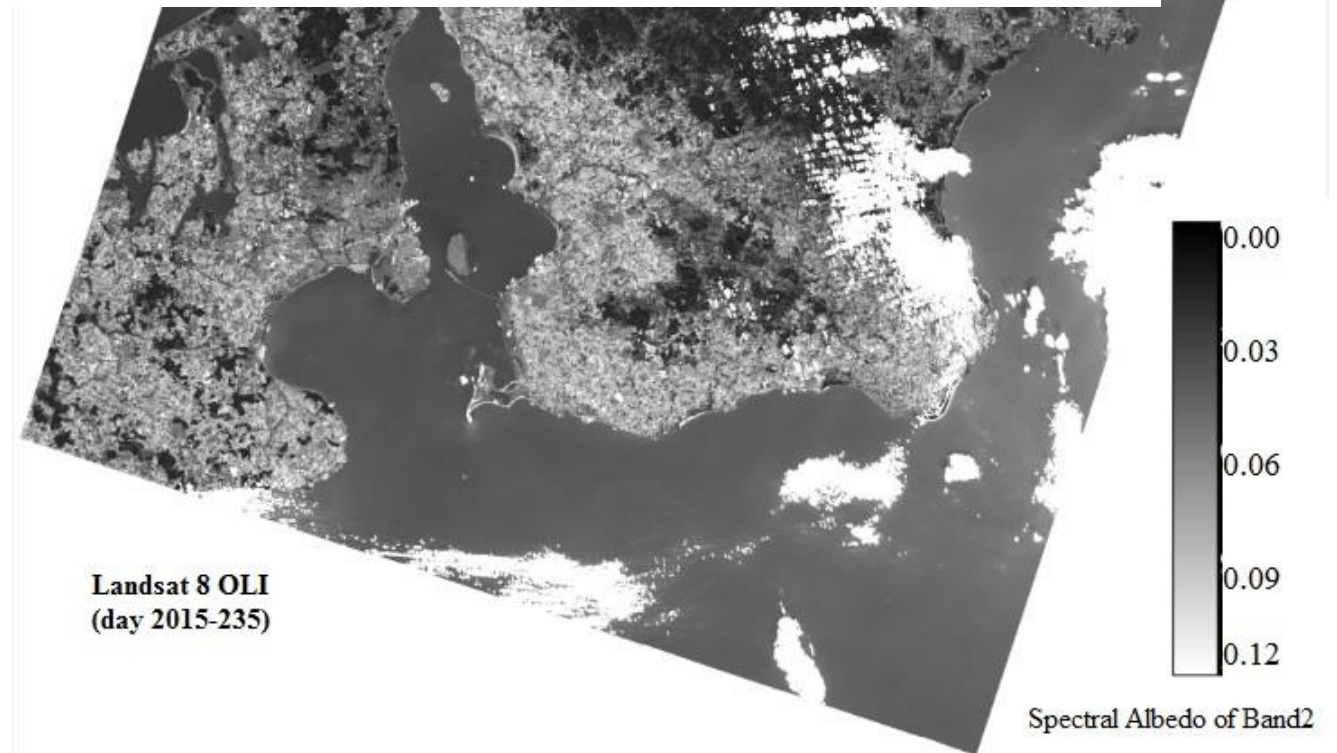
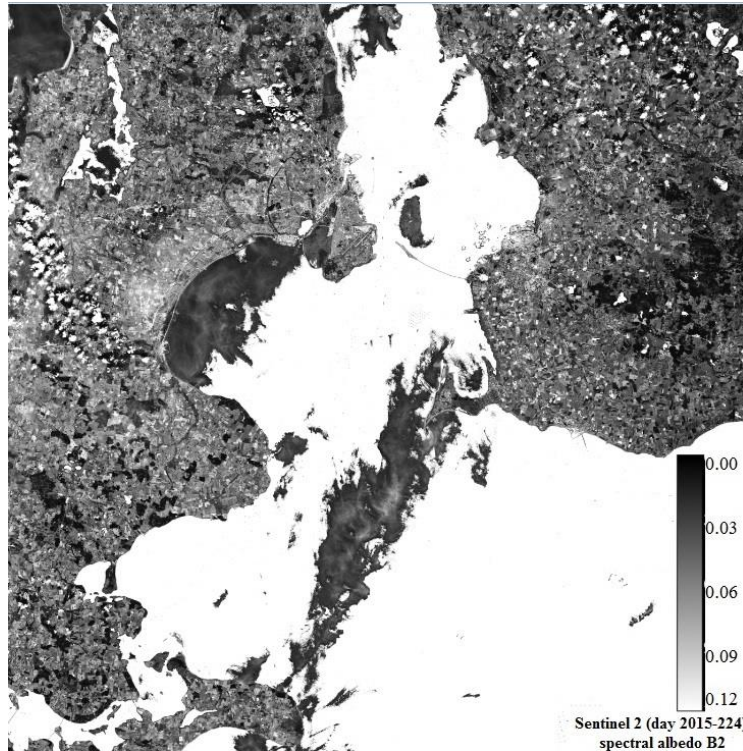
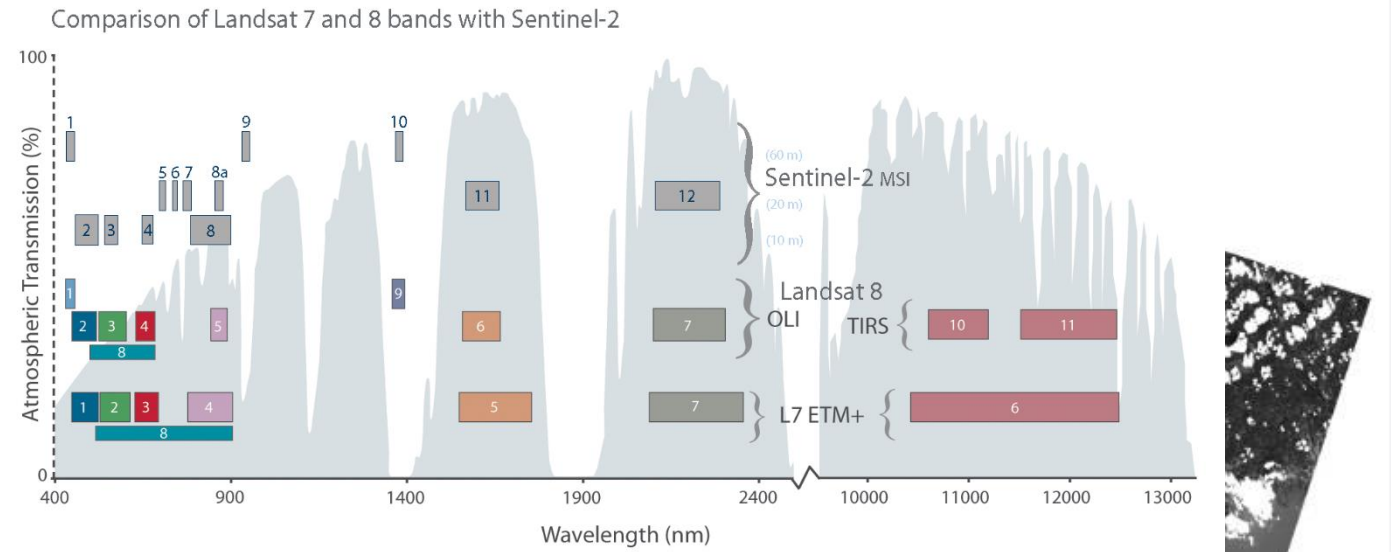
True color White Sky Albedo
combination of **Band 4,3, & 2**
for S2A (left) and Landsat 8 OLI
(right)



Fill values in white



Band 2 WSA for Sentinel-2A (left) and L8 OLI (right)



Fill values in white